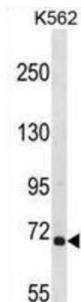


Rac/Cdc42 Guanine Nucleotide Exchange Factor 6 (ARHGEF6) Antibody

Catalogue No.: abx029028



Rho GTPases play a fundamental role in numerous cellular processes that are initiated by extracellular stimuli that work through G protein coupled receptors. The encoded protein belongs to a family of cytoplasmic proteins that activate the Ras-like family of Rho proteins by exchanging bound GDP for GTP. It may form a complex with G proteins and stimulate Rho-dependent signals. This protein is activated by PI3-kinase. Mutations in this gene can cause X-chromosomal non-specific mental retardation. [provided by RefSeq].

Target: Rac/Cdc42 Guanine Nucleotide Exchange Factor 6 (ARHGEF6)

Clonality: Polyclonal

Reactivity: Human

Tested Applications: ELISA, WB

Host: Rabbit

Recommended dilutions: WB: 1/1000. Optimal dilutions/concentrations should be determined by the end user.

Conjugation: Unconjugated

Immunogen: KLH-conjugated synthetic peptide between 614-641 amino acids from the C-terminal region of human ARHGEF6.

Isotype: IgG

Form: Liquid

Purification: Purified through a protein A column, followed by peptide affinity purification.

Storage: Aliquot and store at -20°C. Avoid repeated freeze/thaw cycles.

UniProt Primary AC: Q15052 ([UniProt](#), [ExPASy](#))

Datasheet

Version: 2.0.0

Revision date: 03 May 2025



KEGG: hsa:9459

String: [9606.ENSP00000250617](#)

Molecular Weight: Calculated MW: 87.5 kDa

Buffer: PBS containing 0.09% sodium azide.

Note: THIS PRODUCT IS FOR RESEARCH USE ONLY. NOT FOR USE IN DIAGNOSTIC, THERAPEUTIC OR COSMETIC PROCEDURES. NOT FOR HUMAN OR ANIMAL CONSUMPTION.

For Reference Only