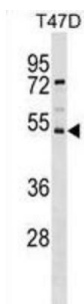


Putative Transporter SVOPL (SVOPL) Antibody

Catalogue No.: abx029060



SVOPL (putative transporter SVOPL), also known as SV2-related protein-like, is a 492 amino acid multi-pass membrane protein belonging to the major facilitator superfamily. SVOPL is a paralog to synaptic vesicle protein (SVOP) that exists as two alternatively spliced isoforms. The gene encoding SVOPL maps to human chromosome 7q34. Chromosome 7 is approximately 158 million bases long, encodes over 1, 000 genes and makes up approximately 5% of the human genome. Chromosome 7 has been linked to Osteogenesis imperfecta, Pendred syndrome, Lissencephaly, Citrullinemia and Shwachman-Diamond syndrome. Deletions of portions of the q arm of chromosome 7 are linked to myeloid disorders, including acute myelogenous leukemia and myelodysplasia.

Target:	Putative Transporter SVOPL (SVOPL)
Clonality:	Polyclonal
Reactivity:	Human
Tested Applications:	ELISA, WB
Host:	Rabbit
Recommended dilutions:	WB: 1/1000. Optimal dilutions/concentrations should be determined by the end user.
Conjugation:	Unconjugated
Immunogen:	KLH-conjugated synthetic peptide between 241-269 amino acids from the Central region of human SVOPL.
Isotype:	IgG
Form:	Liquid
Purification:	Purified through a protein A column, followed by peptide affinity purification.
Storage:	Aliquot and store at -20°C. Avoid repeated freeze/thaw cycles.

Datasheet

Version: 3.0.0

Revision date: 20 Aug 2025



UniProt Primary AC: Q8N434 ([UniProt](#), [ExPASy](#))

Gene Symbol: SVOPL

KEGG: hsa:136306

String: [9606.ENSP00000405482](#)

Molecular Weight: Calculated MW: 54 kDa

Buffer: PBS containing 0.09% sodium azide.

Note: THIS PRODUCT IS FOR RESEARCH USE ONLY. NOT FOR USE IN DIAGNOSTIC, THERAPEUTIC OR COSMETIC PROCEDURES. NOT FOR HUMAN OR ANIMAL CONSUMPTION.

For Reference Only