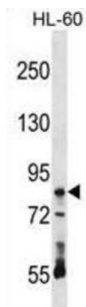


RAVER1 Antibody

Catalogue No.: abx029086



RAVER1 cooperates with PTBP1 to modulate regulated alternative splicing events. Promotes exon skipping. Cooperates with PTBP1 to modulate switching between mutually exclusive exons during maturation of the TPM1 pre-mRNA (By similarity).

Target:	RAVER1
Clonality:	Polyclonal
Reactivity:	Human
Tested Applications:	ELISA, WB
Host:	Rabbit
Recommended dilutions:	WB: 1/1000. Optimal dilutions/concentrations should be determined by the end user.
Conjugation:	Unconjugated
Immunogen:	KLH-conjugated synthetic peptide between 56-83 amino acids from the N-terminal region of human RAVR1.
Isotype:	IgG
Form:	Liquid
Purification:	Purified through a protein A column, followed by peptide affinity purification.
Storage:	Aliquot and store at -20°C. Avoid repeated freeze/thaw cycles.
UniProt Primary AC:	Q8IY67 (UniProt , ExPASy)
Gene Symbol:	RAVER1

Datasheet

Version: 3.0.0

Revision date: 01 Sep 2025



KEGG: hsa:125950

String: [9606.ENSP00000293677](#)

Molecular Weight: Calculated MW: 63.9 kDa

Buffer: PBS containing 0.09% sodium azide.

Specificity: Predicted to react with Mouse and Rat RAVR1.

Note: THIS PRODUCT IS FOR RESEARCH USE ONLY. NOT FOR USE IN DIAGNOSTIC, THERAPEUTIC OR COSMETIC PROCEDURES. NOT FOR HUMAN OR ANIMAL CONSUMPTION.

For Reference Only