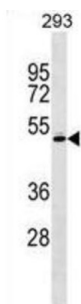


## RCC1 And BTB Domain Containing Protein 1 (RCBTB1) Antibody

Catalogue No.: abx029088



This gene encodes a protein with an N-terminal RCC1 domain and a C-terminal BTB (broad complex, tramtrack and bric-a-brac) domain. In rat, over-expression of this gene in vascular smooth muscle cells induced cellular hypertrophy. In rat, the C-terminus of RCBTB1 interacts with the angiotensin II receptor-1A. In humans, this gene maps to a region of chromosome 13q that is frequently deleted in B-cell chronic lymphocytic leukemia and other lymphoid malignancies.

<b>Target:</b>	RCC1 And BTB Domain Containing Protein 1 (RCBTB1)
<b>Clonality:</b>	Polyclonal
<b>Reactivity:</b>	Human
<b>Tested Applications:</b>	ELISA, WB
<b>Host:</b>	Rabbit
<b>Recommended dilutions:</b>	WB: 1/1000. Optimal dilutions/concentrations should be determined by the end user.
<b>Conjugation:</b>	Unconjugated
<b>Immunogen:</b>	KLH-conjugated synthetic peptide between 350-377 amino acids from the Central region of human RCBTB1.
<b>Isotype:</b>	IgG
<b>Form:</b>	Liquid
<b>Purification:</b>	Purified through a protein A column, followed by peptide affinity purification.
<b>Storage:</b>	Aliquot and store at -20°C. Avoid repeated freeze/thaw cycles.
<b>UniProt Primary AC:</b>	Q8NDN9 ( <a href="#">UniProt</a> , <a href="#">ExPASy</a> )
<b>Gene Symbol:</b>	RCBTB1

# Datasheet

Version: 3.0.0

Revision date: 02 May 2025



**KEGG:** hsa:55213

**String:** [9606.ENSPP00000367552](#)

**Molecular Weight:** Calculated MW: 58.3 kDa

**Buffer:** PBS containing 0.09% sodium azide.

**Note:** THIS PRODUCT IS FOR RESEARCH USE ONLY. NOT FOR USE IN DIAGNOSTIC, THERAPEUTIC OR COSMETIC PROCEDURES. NOT FOR HUMAN OR ANIMAL CONSUMPTION.

For Reference Only