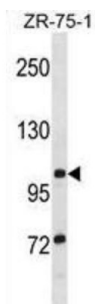


## Tubulin Polyglutamylase TTLL8 (TTLL8) Antibody

Catalogue No.: abx029094



Monoglycylase which modifies both tubulin and non-tubulin proteins, generating side chains of glycine on the gamma-carboxyl groups of specific glutamate residues of target proteins. Monoglycylates tubulin, with a preference for alpha-tubulin toward beta-tubulin. Has the ability to modify non-tubulin proteins such as ANP32A, ANP32B, SET and NCL. Involved in the side-chain initiation step of the glycylation reaction by adding a single glycine chain to generate monoglycine side chains. Not involved in elongation step of the polyglycylation reaction (By similarity).

**Target:** Tubulin Polyglutamylase TTLL8 (TTLL8)

**Clonality:** Polyclonal

**Reactivity:** Human

**Tested Applications:** ELISA, WB

**Host:** Rabbit

**Recommended dilutions:** WB: 1/1000. Optimal dilutions/concentrations should be determined by the end user.

**Conjugation:** Unconjugated

**Immunogen:** KLH-conjugated synthetic peptide between 74-102 amino acids from the N-terminal region of human TTLL8.

**Isotype:** IgG

**Form:** Liquid

**Purification:** Purified through a protein A column, followed by peptide affinity purification.

**Storage:** Aliquot and store at -20°C. Avoid repeated freeze/thaw cycles.

**UniProt Primary AC:** A6PVC2 ([UniProt](#), [ExPASy](#))

# Datasheet

Version: 2.0.0

Revision date: 04 Sep 2025



**Gene Symbol:** TTLL8

**String:** [9606.ENSP00000392252](#)

**Molecular Weight:** Calculated MW: 94.7 kDa

**Buffer:** PBS containing 0.09% sodium azide.

**Note:** THIS PRODUCT IS FOR RESEARCH USE ONLY. NOT FOR USE IN DIAGNOSTIC, THERAPEUTIC OR COSMETIC PROCEDURES. NOT FOR HUMAN OR ANIMAL CONSUMPTION.

For Reference Only