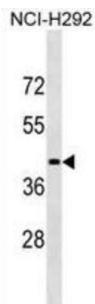


Lipase Member N (LIPN) Antibody

Catalogue No.: abx029095



WB analysis of NCI-H292 cell line lysates.

LIPN plays a highly specific role in the last step of keratinocyte differentiation. May have an essential function in lipid metabolism of the most differentiated epidermal layers.

Target: Lipase Member N (LIPN)

Clonality: Polyclonal

Reactivity: Human

Tested Applications: ELISA, WB

Host: Rabbit

Recommended dilutions: WB: 1/1000. Optimal dilutions/concentrations should be determined by the end user.

Conjugation: Unconjugated

Immunogen: KLH-conjugated synthetic peptide between 279-308 amino acids from the C-terminal region of human LIPN.

Isotype: IgG

Form: Liquid

Purification: Purified through a protein A column, followed by peptide affinity purification.

Storage: Aliquot and store at -20°C. Avoid repeated freeze/thaw cycles.

UniProt Primary AC: Q5VXI9 ([UniProt](#), [ExPASy](#))

KEGG: hsa:643418

Datasheet

Version: 3.0.0

Revision date: 19 Aug 2025



String: [9606.ENSPO0000383923](#)

Molecular Weight: Calculated MW: 45.5 kDa

Buffer: PBS containing 0.09% sodium azide.

Concentration: 0.50 mg/ml

Note: THIS PRODUCT IS FOR RESEARCH USE ONLY. NOT FOR USE IN DIAGNOSTIC, THERAPEUTIC OR COSMETIC PROCEDURES. NOT FOR HUMAN OR ANIMAL CONSUMPTION.

For Reference Only