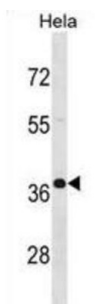


Polyadenylate-Binding Protein 2 (PABPN1) Antibody

Catalogue No.: abx029099



This gene encodes an abundant nuclear protein that binds with high affinity to nascent poly (A) tails. The protein is required for progressive and efficient polymerization of poly (A) tails on the 3' ends of eukaryotic genes and controls the size of the poly (A) tail to about 250 nt. At steady-state, this protein is localized in the nucleus whereas a different poly (A) binding protein is localized in the cytoplasm. An expansion of the trinucleotide (GCG) repeat from normal 6 to 8-13 at the 5' end of the coding region of this gene leads to autosomal dominant oculopharyngeal muscular dystrophy (OPMD) disease. Multiple splice variants have been described but their full-length nature is not known. One splice variant includes introns 1 and 6 but no protein is formed.

Target:	Polyadenylate-Binding Protein 2 (PABPN1)
Clonality:	Polyclonal
Reactivity:	Human
Tested Applications:	ELISA, WB
Host:	Rabbit
Recommended dilutions:	WB: 1/1000. Optimal dilutions/concentrations should be determined by the end user.
Conjugation:	Unconjugated
Immunogen:	KLH-conjugated synthetic peptide between 270-298 amino acids from the C-terminal region of human PABPN1.
Isotype:	IgG
Form:	Liquid
Purification:	Purified through a protein A column, followed by peptide affinity purification.
Storage:	Aliquot and store at -20°C. Avoid repeated freeze/thaw cycles.

Datasheet

Version: 2.0.0
Revision date: 19 Jun 2025



UniProt Primary AC: Q86U42 ([UniProt](#), [ExPASy](#))

Gene Symbol: PABPN1

KEGG: hsa:8106

String: [9606.ENSP00000216727](#)

Molecular Weight: Calculated MW: 32.7 kDa

Buffer: PBS containing 0.09% sodium azide.

Specificity: Predicted to react with Cow PABPN1.

Note: THIS PRODUCT IS FOR RESEARCH USE ONLY. NOT FOR USE IN DIAGNOSTIC, THERAPEUTIC OR COSMETIC PROCEDURES. NOT FOR HUMAN OR ANIMAL CONSUMPTION.

For Reference Only