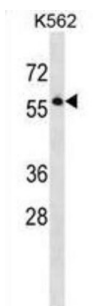


Septin 8 (SEPTIN8) Antibody

Catalogue No.: abx029100



SEPT8 is a member of the highly conserved septin family. Septins are 40 to 60-kD GTPases that assemble as filamentous scaffolds. They are involved in the organization of submembranous structures, in neuronal polarity, and in vesicle trafficking (Blaser et al., 2003 [PubMed 12909369]).

Target: Septin 8 (SEPTIN8)

Clonality: Polyclonal

Reactivity: Human

Tested Applications: ELISA, WB

Host: Rabbit

Recommended dilutions: WB: 1/1000. Optimal dilutions/concentrations should be determined by the end user.

Conjugation: Unconjugated

Immunogen: KLH-conjugated synthetic peptide between 407-436 amino acids from the C-terminal region of human SEPT8.

Isotype: IgG

Form: Liquid

Purification: Purified through a protein A column, followed by peptide affinity purification.

Storage: Aliquot and store at -20°C. Avoid repeated freeze/thaw cycles.

UniProt Primary AC: Q92599 ([UniProt](#), [ExPASy](#))

KEGG: hsa:23176

Datasheet

Version: 3.0.0

Revision date: 13 Aug 2025



String: [9606.ENSF00000367991](#)

Molecular Weight: Calculated MW: 55.8 kDa

Buffer: PBS containing 0.09% sodium azide.

Note: THIS PRODUCT IS FOR RESEARCH USE ONLY. NOT FOR USE IN DIAGNOSTIC, THERAPEUTIC OR COSMETIC PROCEDURES. NOT FOR HUMAN OR ANIMAL CONSUMPTION.

For Reference Only