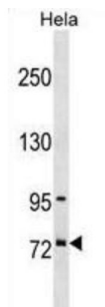


Splicing Factor 4 (SF4) Antibody

Catalogue No.: abx029104



SF4 is a member of the SURP family of splicing factors.

Target: Splicing Factor 4 (SF4)

Clonality: Polyclonal

Reactivity: Human

Tested Applications: ELISA, WB

Host: Rabbit

Recommended dilutions: WB: 1/1000. Optimal dilutions/concentrations should be determined by the end user.

Conjugation: Unconjugated

Immunogen: KLH-conjugated synthetic peptide between 364-393 amino acids from the Central region of human SF4.

Isotype: IgG

Form: Liquid

Purification: Purified through a protein A column, followed by peptide affinity purification.

Storage: Aliquot and store at -20°C. Avoid repeated freeze/thaw cycles.

UniProt Primary AC: Q8IWZ8 ([UniProt](#), [ExPASy](#))

Gene Symbol: SUGP1

KEGG: hsa:57794

Datasheet

Version: 3.0.0

Revision date: 11 Sep 2025



String: [9606.ENSPO0000247001](#)

Molecular Weight: Calculated MW: 72.5 kDa

Buffer: PBS containing 0.09% sodium azide.

Specificity: Predicted to react with Mouse and Rat SUGP1.

Note: THIS PRODUCT IS FOR RESEARCH USE ONLY. NOT FOR USE IN DIAGNOSTIC, THERAPEUTIC OR COSMETIC PROCEDURES. NOT FOR HUMAN OR ANIMAL CONSUMPTION.

For Reference Only