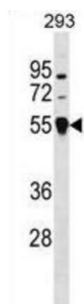


Tripartite Motif-Containing Protein 26 (TRIM26) Antibody

Catalogue No.: abx029114



Western blot analysis of 293 cell lysates (35 µg/lane) using Tripartite Motif-Containing Protein 26 (TRIM26) Antibody.

Tripartite Motif-Containing Protein 26 (TRIM26) Antibody is an antibody for the detection of TRIM26. The protein encoded by this gene is a member of the tripartite motif (TRIM) family. The TRIM motif includes three zinc-binding domains, a RING, a B-box type 1 and a B-box type 2, and a coiled-coil region. The protein localizes to cytoplasmic bodies. Although the function of the protein is unknown, the RING domain suggests that the protein may have DNA-binding activity. The gene localizes to the major histocompatibility complex (MHC) class I region on chromosome 6.

Target:	Tripartite Motif-Containing Protein 26 (TRIM26)
Clonality:	Polyclonal
Reactivity:	Human
Tested Applications:	ELISA, WB
Host:	Rabbit
Recommended dilutions:	WB: 1/1000. Optimal dilutions/concentrations should be determined by the end user.
Conjugation:	Unconjugated
Immunogen:	KLH-conjugated synthetic peptide between 141-169 amino acids from the N-terminal region of human TRIM26.
Isotype:	IgG
Form:	Liquid
Purification:	Purified through a protein A column, followed by peptide affinity purification.
Storage:	Aliquot and store at -20°C. Avoid repeated freeze/thaw cycles.
UniProt Primary AC:	Q12899 (UniProt , ExPASy)

Datasheet

Version: 5.0.0

Revision date: 10 Sep 2025



KEGG: hsa:7726

String: [9606.ENSP00000410446](#)

Molecular Weight: Calculated MW: 62.2 kDa

Buffer: PBS containing 0.09% sodium azide.

Specificity: Predicted to react with Mouse, Rat and Pig TRIM26.

Concentration: 0.5 mg/ml

Note: THIS PRODUCT IS FOR RESEARCH USE ONLY. NOT FOR USE IN DIAGNOSTIC, THERAPEUTIC OR COSMETIC PROCEDURES. NOT FOR HUMAN OR ANIMAL CONSUMPTION.

For Reference Only