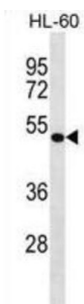


Drebrin-Like Protein (DBNL) Antibody

Catalogue No.: abx029164



This product is currently in development. The lead time for this product may be several months. Please contact us at info@abbexa.com for an updated lead time before purchasing this product.

This product is currently in development. The lead time for this product may be several months. Please contact us at info@abbexa.com for an updated lead time before purchasing this product.

Actin-binding adapter protein. May act as a common effector of antigen receptor-signaling pathways in leukocytes. Its association with dynamin suggests that it may also connect the actin cytoskeleton to endocytic function. Acts as a key component of the immunological synapse that regulates T-cell activation by bridging TCRs and the actin cytoskeleton to gene activation and endocytic processes. Binds to F-actin but is not involved in actin polymerization, capping or bundling. Does not bind G-actin.

Target: Drebrin-Like Protein (DBNL)

Clonality: Polyclonal

Reactivity: Human

Tested Applications: ELISA, WB

Host: Rabbit

Recommended dilutions: WB: 1/1000. Optimal dilutions/concentrations should be determined by the end user.

Conjugation: Unconjugated

Immunogen: KLH-conjugated synthetic peptide between 292-319 amino acids from the C-terminal region of human DBNL.

Isotype: IgG

Form: Liquid

Datasheet

Version: 2.0.0

Revision date: 06 May 2025



Purification:	Purified through a protein A column, followed by peptide affinity purification.
Storage:	Aliquot and store at -20°C. Avoid repeated freeze/thaw cycles.
UniProt Primary AC:	Q9UJU6 (UniProt , ExPASy)
Gene Symbol:	DBNL
String:	9606.ENSP00000417653
Molecular Weight:	Calculated MW: 48.2 kDa
Buffer:	PBS containing 0.09% sodium azide.
Note:	THIS PRODUCT IS FOR RESEARCH USE ONLY. NOT FOR USE IN DIAGNOSTIC, THERAPEUTIC OR COSMETIC PROCEDURES. NOT FOR HUMAN OR ANIMAL CONSUMPTION.

For Reference Only