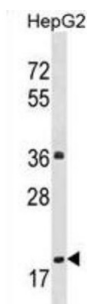


Protein Phosphatase, Mg²⁺/Mn²⁺ Dependent 1M (PPM1M) Antibody

Catalogue No.: abx029167



WB analysis of extracts of HepG2 cell line lysates (35 µg/lane), using PPM1M Antibody.

PPM1M belongs to the PP2C family.

Target:	Protein Phosphatase, Mg ²⁺ /Mn ²⁺ Dependent 1M (PPM1M)
Clonality:	Polyclonal
Reactivity:	Human
Tested Applications:	ELISA, WB
Host:	Rabbit
Recommended dilutions:	WB: 1/1000. Optimal dilutions/concentrations should be determined by the end user.
Conjugation:	Unconjugated
Immunogen:	KLH-conjugated synthetic peptide between 130-158 amino acids from the Central region of human PPM1M.
Isotype:	IgG
Form:	Liquid
Purification:	Purified through a protein A column, followed by peptide affinity purification.
Storage:	Aliquot and store at -20°C. Avoid repeated freeze/thaw cycles.
UniProt Primary AC:	Q96MI6 (UniProt , ExPASy)
Gene Symbol:	PPM1M
GeneID:	132160

Datasheet

Version: 3.0.0

Revision date: 21 Sep 2025



KEGG: hsa:132160

String: [9606.ENSP00000387046](#)

Molecular Weight: Calculated MW: 51.1 kDa

Buffer: PBS containing 0.09% sodium azide.

Specificity: Predicted to react with Mouse PPM1M.

Concentration: 0.42 mg/ml

Note: THIS PRODUCT IS FOR RESEARCH USE ONLY. NOT FOR USE IN DIAGNOSTIC, THERAPEUTIC OR COSMETIC PROCEDURES. NOT FOR HUMAN OR ANIMAL CONSUMPTION.

For Reference Only