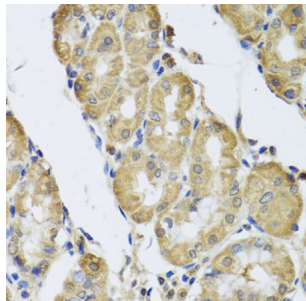
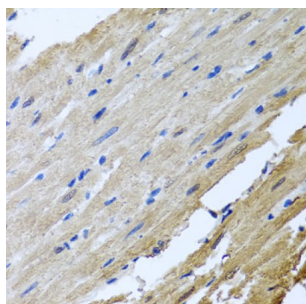


Calcium/calmodulin-Dependent Protein Kinase Type II Subunit Gamma (CAMK2G) Antibody

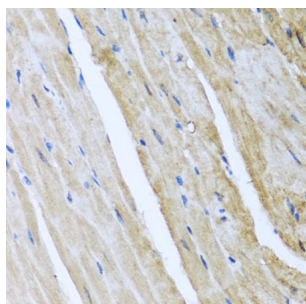
Catalogue No.: abx002317



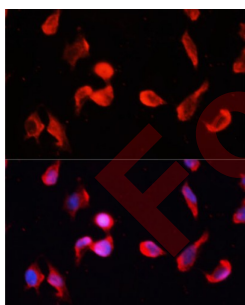
Immunohistochemistry of paraffin-embedded Human stomach using CAMK2G Antibody (1/100 dilution, 40x lens).



Immunohistochemistry of paraffin-embedded Rat heart using CAMK2G Antibody (1/100 dilution, 40x lens).



Immunohistochemistry of paraffin-embedded Mouse heart using CAMK2G Antibody (1/100 dilution, 40x lens).



Immunofluorescence analysis of HeLa cells using CAMK2G Antibody (1/100 dilution, 40x lens). Blue: DAPI for nuclear staining.

CAMK2G Antibody is a Rabbit Polyclonal antibody against CAMK2G. The product of this gene is one of the four subunits of an enzyme which belongs to the serine/threonine protein kinase family, and to the Ca(2+)/calmodulin-dependent protein kinase subfamily. Calcium signaling is crucial for several aspects of plasticity at glutamatergic synapses. In mammalian cells the enzyme is composed of four different chains: alpha, beta, gamma, and delta. The product of this gene is a gamma chain. Many alternatively spliced transcripts encoding different isoforms have been described but the full-length nature of all the variants has not been determined.

Datasheet

Version: 4.0.0
Revision date: 11 Sep 2025



Target:	Calcium/calmodulin-Dependent Protein Kinase Type II Subunit Gamma (CAMK2G)
Clonality:	Polyclonal
Reactivity:	Human, Mouse, Rat
Tested Applications:	IHC, IF/ICC
Host:	Rabbit
Recommended dilutions:	IHC-P: 1/50 - 1/200, IF/ICC: 1/50 - 1/200. Not tested in IHC-F. Optimal dilutions/concentrations should be determined by the end user.
Conjugation:	Unconjugated
Immunogen:	Recombinant fusion protein corresponding to human CAMK2G
Isotype:	IgG
Form:	Liquid
Purification:	Purified by affinity chromatography.
Storage:	Aliquot and store at -20°C. Avoid repeated freeze/thaw cycles.
UniProt Primary AC:	Q13555 (UniProt , ExPASy)
Gene Symbol:	CAMK2G
GeneID:	818
NCBI Accession:	NP_751909.1
KEGG:	hsa:818
String:	9606.ENSP00000319060
Buffer:	PBS, pH 7.3, containing 0.02% sodium azide, 50% glycerol.
Concentration:	1 mg/ml
Note:	THIS PRODUCT IS FOR RESEARCH USE ONLY. NOT FOR USE IN DIAGNOSTIC, THERAPEUTIC OR COSMETIC PROCEDURES. NOT FOR HUMAN OR ANIMAL CONSUMPTION.