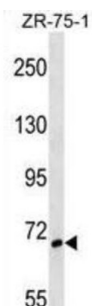


SH3 Domain Binding Protein 1 (SH3BP1) Antibody

Catalogue No.: abx029169



SH3BP1 binds differentially to the SH3 domains of certain proteins of signal transduction pathways. This protein binds preferentially to the ABL1 proto-oncogene, SRC and GRB2. Shows GAP activity for Rac-related proteins but not for Rho-or Ras-related proteins. It inhibits PDGF-induced membrane ruffling mediated by Rac (By similarity).

Target:	SH3 Domain Binding Protein 1 (SH3BP1)
Clonality:	Polyclonal
Reactivity:	Human
Tested Applications:	ELISA, WB
Host:	Rabbit
Recommended dilutions:	WB: 1/1000. Optimal dilutions/concentrations should be determined by the end user.
Conjugation:	Unconjugated
Immunogen:	KLH-conjugated synthetic peptide between 419-446 amino acids from the Central region of human SH3BP1.
Isotype:	IgG
Form:	Liquid
Purification:	Purified through a protein A column, followed by peptide affinity purification.
Storage:	Aliquot and store at -20°C. Avoid repeated freeze/thaw cycles.
UniProt Primary AC:	Q9Y3L3 (UniProt , ExPASy)
Gene Symbol:	SH3BP1

Datasheet

Version: 4.0.0

Revision date: 06 Aug 2025



String: [9606.ENSPO0000350018](#)

Molecular Weight: Calculated MW: 75.7 kDa

Buffer: PBS containing 0.09% sodium azide.

Specificity: Predicted to react with Mouse and Rat SH3BP1.

Note: THIS PRODUCT IS FOR RESEARCH USE ONLY. NOT FOR USE IN DIAGNOSTIC, THERAPEUTIC OR COSMETIC PROCEDURES. NOT FOR HUMAN OR ANIMAL CONSUMPTION.

For Reference Only