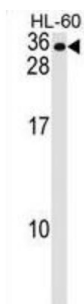


Membrane Spanning 4-Domains A7 (MS4A7) Antibody

Catalogue No.: abx029171



WB analysis of HL-60 cell line lysates (35 µg/lane), using MS4A7 antibody.

This gene encodes a member of the membrane-spanning 4A gene family, members of which are characterized by common structural features and similar intron/exon splice boundaries and display unique expression patterns in hematopoietic cells and nonlymphoid tissues. This family member is associated with mature cellular function in the monocytic lineage, and it may be a component of a receptor complex involved in signal transduction. This gene is localized to 11q12, in a cluster of other family members. At least four alternatively spliced transcript variants encoding two distinct isoforms have been observed. [provided by RefSeq].

Target:	Membrane Spanning 4-Domains A7 (MS4A7)
Clonality:	Polyclonal
Reactivity:	Human
Tested Applications:	ELISA, WB
Host:	Rabbit
Recommended dilutions:	WB: 1/1000. Optimal dilutions/concentrations should be determined by the end user.
Conjugation:	Unconjugated
Immunogen:	KLH-conjugated synthetic peptide between 137-164 amino acids from the Central region of human MS4A7.
Isotype:	IgG
Form:	Liquid
Purification:	Purified through a protein A column, followed by peptide affinity purification.
Storage:	Aliquot and store at -20°C. Avoid repeated freeze/thaw cycles.
UniProt Primary AC:	Q9GZW8 (UniProt , ExPASy)

Datasheet

Version: 3.0.0

Revision date: 20 Aug 2025



Gene Symbol: MS4A7

String: [9606.ENSP00000300184](#)

Molecular Weight: Calculated MW: 26.1 kDa

Buffer: PBS containing 0.09% sodium azide.

Concentration: 0.5 mg/ml

Note: THIS PRODUCT IS FOR RESEARCH USE ONLY. NOT FOR USE IN DIAGNOSTIC, THERAPEUTIC OR COSMETIC PROCEDURES. NOT FOR HUMAN OR ANIMAL CONSUMPTION.

For Reference Only