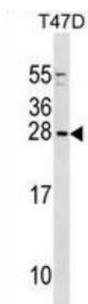


Glycine Cleavage System H Protein (GCSH) Antibody

Catalogue No.: abx029174



The glycine cleavage system catalyzes the degradation of glycine. The H protein shuttles the methylamine group of glycine from the P protein to the T protein.

Target:	Glycine Cleavage System H Protein (GCSH)
Clonality:	Polyclonal
Reactivity:	Human
Tested Applications:	ELISA, WB
Host:	Rabbit
Recommended dilutions:	WB: 1/1000. Optimal dilutions/concentrations should be determined by the end user.
Conjugation:	Unconjugated
Immunogen:	KLH-conjugated synthetic peptide between 27-56 amino acids from the N-terminal region of human GCSH.
Isotype:	IgG
Form:	Liquid
Purification:	Purified through a protein A column, followed by peptide affinity purification.
Storage:	Aliquot and store at -20°C. Avoid repeated freeze/thaw cycles.
UniProt Primary AC:	P23434 (UniProt , ExPASy)
Gene Symbol:	GCSH

Datasheet

Version: 3.0.0

Revision date: 16 Oct 2025



KEGG: hsa:2653

String: [9606.ENSP00000319531](#)

Molecular Weight: Calculated MW: 18.9 kDa

Buffer: PBS containing 0.09% sodium azide.

Specificity: Predicted to react with Cow and Rabbit GCSH.

Note: THIS PRODUCT IS FOR RESEARCH USE ONLY. NOT FOR USE IN DIAGNOSTIC, THERAPEUTIC OR COSMETIC PROCEDURES. NOT FOR HUMAN OR ANIMAL CONSUMPTION.

For Reference Only