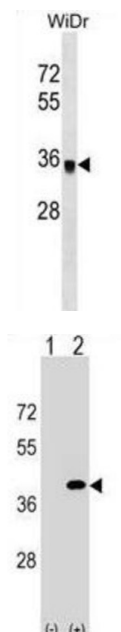


Protein Phosphatase 1 Catalytic Subunit Gamma (PPP1CC) Antibody

Catalogue No.: abx029194



Protein phosphatase 1 (PP1) is essential for cell division, and participates in the regulation of glycogen metabolism, muscle contractility and protein synthesis. Involved in regulation of ionic conductances and long-term synaptic plasticity. May play an important role in dephosphorylating substrates such as the postsynaptic density-associated Ca (2+) /calmodulin dependent protein kinase II.

Target: Protein Phosphatase 1 Catalytic Subunit Gamma (PPP1CC)

Clonality: Polyclonal

Reactivity: Human

Tested Applications: ELISA, WB

Host: Rabbit

Recommended dilutions: WB: 1/1000. Optimal dilutions/concentrations should be determined by the end user.

Conjugation: Unconjugated

Immunogen: KLH-conjugated synthetic peptide between 281-309 amino acids from the C-terminal region of human PPP1CC.

Isotype: IgG

Form: Liquid

Datasheet

Version: 3.0.0
Revision date: 22 Jul 2025



Purification:	Purified through a protein A column, followed by peptide affinity purification.
Storage:	Aliquot and store at -20°C. Avoid repeated freeze/thaw cycles.
UniProt Primary AC:	P36873 (UniProt , ExPASy)
Gene Symbol:	PPP1CC
KEGG:	hsa:5501
String:	9606.ENSP00000341779
Molecular Weight:	Calculated MW: 37 kDa
Buffer:	PBS containing 0.09% sodium azide.
Specificity:	Predicted to react with Mouse, Rat and Cow PPP1CC.
Note:	THIS PRODUCT IS FOR RESEARCH USE ONLY. NOT FOR USE IN DIAGNOSTIC, THERAPEUTIC OR COSMETIC PROCEDURES. NOT FOR HUMAN OR ANIMAL CONSUMPTION.

For Reference Only