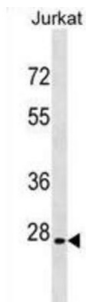


Acidic Leucine-Rich Nuclear Phosphoprotein 32 Family Member B (ANP32B) Antibody

Catalogue No.: abx029214



Multifunctional protein working as a cell cycle progression factor as well as a cell survival factor. Required for the progression from the G1 to the S phase. Anti-apoptotic protein which functions as a caspase-3 inhibitor. Has no phosphatase 2A (PP2A) inhibitor activity (By similarity).

Target:	Acidic Leucine-Rich Nuclear Phosphoprotein 32 Family Member B (ANP32B)
Clonality:	Polyclonal
Reactivity:	Human
Tested Applications:	ELISA, WB
Host:	Rabbit
Recommended dilutions:	WB: 1/1000. Optimal dilutions/concentrations should be determined by the end user.
Conjugation:	Unconjugated
Immunogen:	KLH-conjugated synthetic peptide between 17-45 amino acids from the N-terminal region of human ANP32B.
Isotype:	IgG
Form:	Liquid
Purification:	Purified through a protein A column, followed by peptide affinity purification.
Storage:	Aliquot and store at -20°C. Avoid repeated freeze/thaw cycles.
UniProt Primary AC:	Q92688 (UniProt , ExPASy)

Datasheet

Version: 4.0.0
Revision date: 13 Oct 2025



Gene Symbol: ANP32B

GeneID: [10541](#)

HGNC: 16677

KEGG: hsa:10541

Ensembl: ENSG00000136938

String: [9606.ENSP00000345848](#)

Molecular Weight: Calculated MW: 28.8 kDa

Buffer: PBS containing 0.09% sodium azide.

Specificity: Predicted to react with Cow and Sheep ANP32B.

Note: THIS PRODUCT IS FOR RESEARCH USE ONLY. NOT FOR USE IN DIAGNOSTIC, THERAPEUTIC OR COSMETIC PROCEDURES. NOT FOR HUMAN OR ANIMAL CONSUMPTION.

For Reference Only