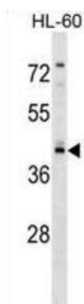


Regulator of G Protein Signaling 11 (RGS11) Antibody

Catalogue No.: abx029227



The protein encoded by this gene belongs to the RGS (regulator of G protein signaling) family. Members of the RGS family act as GTPase-activating proteins on the alpha subunits of heterotrimeric, signal-transducing G proteins. This protein inhibits signal transduction by increasing the GTPase activity of G protein alpha subunits, thereby driving them into their inactive GDP-bound form. Alternative splicing occurs at this locus and two transcript variants encoding distinct isoforms have been identified.

Target:	Regulator of G Protein Signaling 11 (RGS11)
Clonality:	Polyclonal
Reactivity:	Human
Tested Applications:	ELISA, WB
Host:	Rabbit
Recommended dilutions:	WB: 1/1000. Optimal dilutions/concentrations should be determined by the end user.
Conjugation:	Unconjugated
Immunogen:	KLH-conjugated synthetic peptide between 205-234 amino acids from the Central region of human RGS11.
Isotype:	IgG
Form:	Liquid
Purification:	Purified through a protein A column, followed by peptide affinity purification.
Storage:	Aliquot and store at -20°C. Avoid repeated freeze/thaw cycles.
UniProt Primary AC:	O94810 (UniProt , ExPASy)
Gene Symbol:	RGS11

Datasheet

Version: 3.0.0

Revision date: 20 Aug 2025



KEGG: hsa:8786

String: [9606.ENSP00000380876](#)

Molecular Weight: Calculated MW: 52.9 kDa

Buffer: PBS containing 0.09% sodium azide.

Note: THIS PRODUCT IS FOR RESEARCH USE ONLY. NOT FOR USE IN DIAGNOSTIC, THERAPEUTIC OR COSMETIC PROCEDURES. NOT FOR HUMAN OR ANIMAL CONSUMPTION.

For Reference Only