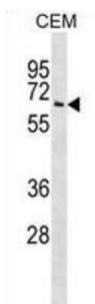


Tripeptidyl Peptidase I (TPP1) Antibody

Catalogue No.: abx029244



This gene encodes a member of the sedolisin family of serine proteases. The protease functions in the lysosome to cleave N-terminal tripeptides from substrates, and has weaker endopeptidase activity. It is synthesized as a catalytically-inactive enzyme which is activated and auto-proteolyzed upon acidification. Mutations in this gene result in late-infantile neuronal ceroid lipofuscinosis, which is associated with the failure to degrade specific neuropeptides and a subunit of ATP synthase in the lysosome.

Target: Tripeptidyl Peptidase I (TPP1)

Clonality: Polyclonal

Reactivity: Human

Tested Applications: ELISA, WB

Host: Rabbit

Recommended dilutions: WB: 1/1000. Optimal dilutions/concentrations should be determined by the end user.

Conjugation: Unconjugated

Immunogen: KLH-conjugated synthetic peptide between 6-34 amino acids from the N-terminal region of human TPP1.

Isotype: IgG

Form: Liquid

Purification: Purified through a protein A column, followed by peptide affinity purification.

Storage: Aliquot and store at -20°C. Avoid repeated freeze/thaw cycles.

UniProt Primary AC: O14773 ([UniProt](#), [ExPASy](#))

Datasheet

Version: 3.0.0

Revision date: 08 Sep 2025



Gene Symbol:	TPP1
KEGG:	hsa:1200
String:	9606.ENSP00000299427
Molecular Weight:	Calculated MW: 61.2 kDa
Buffer:	PBS containing 0.09% sodium azide.
Specificity:	Predicted to react with Monkey TPP1.
Note:	THIS PRODUCT IS FOR RESEARCH USE ONLY. NOT FOR USE IN DIAGNOSTIC, THERAPEUTIC OR COSMETIC PROCEDURES. NOT FOR HUMAN OR ANIMAL CONSUMPTION.

For Reference Only