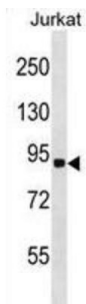


Ring Finger Protein 10 (RNF10) Antibody

Catalogue No.: abx029259



The protein encoded by this gene contains a ring finger motif, which is known to be involved in protein-protein interactions. The specific function of this protein has not yet been determined. EST data suggests the existence of multiple alternatively spliced transcript variants, however, their full length nature is not known.

Target: Ring Finger Protein 10 (RNF10)

Clonality: Polyclonal

Reactivity: Human

Tested Applications: ELISA, WB

Host: Rabbit

Recommended dilutions: WB: 1/1000. Optimal dilutions/concentrations should be determined by the end user.

Conjugation: Unconjugated

Immunogen: KLH-conjugated synthetic peptide between 178-206 amino acids from the N-terminal region of human RNF10.

Isotype: IgG

Form: Liquid

Purification: Purified through a protein A column, followed by peptide affinity purification.

Storage: Aliquot and store at -20°C. Avoid repeated freeze/thaw cycles.

UniProt Primary AC: Q8N5U6 ([UniProt](#), [ExPASy](#))

Gene Symbol: RNF10

Datasheet

Version: 2.0.0

Revision date: 02 Oct 2025



KEGG: hsa:9921

String: [9606.ENSP0000032242](#)

Molecular Weight: Calculated MW: 89.9 kDa

Buffer: PBS containing 0.09% sodium azide.

Note: THIS PRODUCT IS FOR RESEARCH USE ONLY. NOT FOR USE IN DIAGNOSTIC, THERAPEUTIC OR COSMETIC PROCEDURES. NOT FOR HUMAN OR ANIMAL CONSUMPTION.

For Reference Only