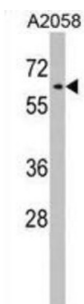


RIC8 Guanine Nucleotide Exchange Factor A (RIC8A) Antibody

Catalogue No.: abx029287



Guanine nucleotide exchange factor (GEF), which can activate some, but not all, G-alpha proteins. Able to activate GNAI1, GNAO1 and GNAQ, but not GNAS by exchanging bound GDP for free GTP. Involved in regulation of microtubule pulling forces during mitotic movement of chromosomes by stimulating G (i) alpha protein, possibly leading to release G (i) alpha-GTP and NuMA proteins from the NuMA-GPSM2-G (i) alpha-GDP complex (By similarity). Also acts as an activator for G (q) alpha (GNAQ) protein by enhancing the G (q) coupled receptor-mediated ERK activation.

| | |
|-------------------------------|--|
| Target: | RIC8 Guanine Nucleotide Exchange Factor A (RIC8A) |
| Clonality: | Polyclonal |
| Reactivity: | Human |
| Tested Applications: | ELISA, WB |
| Host: | Rabbit |
| Recommended dilutions: | WB: 1/1000. Optimal dilutions/concentrations should be determined by the end user. |
| Conjugation: | Unconjugated |
| Immunogen: | KLH-conjugated synthetic peptide between 244-272 amino acids from the Central region of human RIC8A. |
| Isotype: | IgG |
| Form: | Liquid |
| Purification: | Purified through a protein A column, followed by peptide affinity purification. |
| Storage: | Aliquot and store at -20°C. Avoid repeated freeze/thaw cycles. |
| UniProt Primary AC: | Q9NPQ8 (UniProt , ExPASy) |

Datasheet

Version: 2.0.0

Revision date: 06 Mar 2025



Gene Symbol: RIC8A

String: [9606.ENSP00000325941](#)

Molecular Weight: Calculated MW: 59.7 kDa

Buffer: PBS containing 0.09% sodium azide.

Specificity: Predicted to react with Monkey RIC8A.

Note: THIS PRODUCT IS FOR RESEARCH USE ONLY. NOT FOR USE IN DIAGNOSTIC, THERAPEUTIC OR COSMETIC PROCEDURES. NOT FOR HUMAN OR ANIMAL CONSUMPTION.

For Reference Only