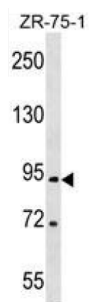
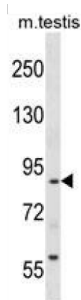


## Isoform RTN1-C (RTN1) Antibody

Catalogue No.: abx029339



WB analysis of ZR-75-1 cell lysates (35 µg/lane). RTN1 protein detection shown by the arrow.



WB analysis of ZR-Mouse testis tissue (35 µg/lane). RTN1 protein detection shown by the arrow.

This gene belongs to the family of reticulon encoding genes. Reticulons are associated with the endoplasmic reticulum, and are involved in neuroendocrine secretion or in membrane trafficking in neuroendocrine cells. Alternatively spliced transcript variants encoding different isoforms have been identified. Multiple promoters rather than alternative splicing of internal exons seem to be involved in this diversity. [provided by RefSeq].

**Target:** Isoform RTN1-C (RTN1)

**Clonality:** Polyclonal

**Reactivity:** Human, Mouse

**Tested Applications:** ELISA, WB

**Host:** Rabbit

**Recommended dilutions:** WB: 1/1000. Optimal dilutions/concentrations should be determined by the end user.

**Conjugation:** Unconjugated

**Immunogen:** KLH-conjugated synthetic peptide between 198-227 amino acids from the N-terminal region of human RTN1.

**Isotype:** IgG

**Form:** Liquid

# Datasheet

Version: 3.0.0  
Revision date: 03 Jun 2025



<b>Purification:</b>	Purified through a protein A column, followed by peptide affinity purification.
<b>Storage:</b>	Aliquot and store at -20°C. Avoid repeated freeze/thaw cycles.
<b>UniProt Primary AC:</b>	Q16799 ( <a href="#">UniProt</a> , <a href="#">ExPASy</a> )
<b>GeneID:</b>	<a href="#">6252</a>
<b>KEGG:</b>	hsa:6252
<b>String:</b>	<a href="#">9606.ENSP00000267484</a>
<b>Molecular Weight:</b>	Calculated MW: 83.6 kDa
<b>Buffer:</b>	PBS containing 0.09% sodium azide.
<b>Concentration:</b>	0.46 mg/ml
<b>Note:</b>	THIS PRODUCT IS FOR RESEARCH USE ONLY. NOT FOR USE IN DIAGNOSTIC, THERAPEUTIC OR COSMETIC PROCEDURES. NOT FOR HUMAN OR ANIMAL CONSUMPTION.

For Reference Only