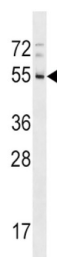


## Blood Group RhD Polypeptide (RHD) Antibody

Catalogue No.: abx029359



WB analysis of A549 cell lysate (35 µg lysate/lane) using RHD antibody. Detection of RHD protein is demonstrated by the arrow.

The Rh blood group system is the second most clinically significant of the blood groups, second only to ABO. It is also the most polymorphic of the blood groups, with variations due to deletions, gene conversions, and missense mutations. The Rh blood group includes this gene, which encodes the RhD protein, and a second gene that encodes both the RhC and RhE antigens on a single polypeptide. The two genes, and a third unrelated gene, are found in a cluster on chromosome 1. The classification of Rh-positive and Rh-negative individuals is determined by the presence or absence of the highly immunogenic RhD protein on the surface of erythrocytes. Multiple transcript variants encoding different isoforms have been found for this gene.

<b>Target:</b>	Blood Group RhD Polypeptide (RHD)
<b>Research Area:</b>	Hematology
<b>Clonality:</b>	Polyclonal
<b>Reactivity:</b>	Human
<b>Tested Applications:</b>	ELISA, WB
<b>Host:</b>	Rabbit
<b>Recommended dilutions:</b>	WB: 1/1000. Optimal dilutions/concentrations should be determined by the end user.
<b>Conjugation:</b>	Unconjugated
<b>Immunogen:</b>	KLH-conjugated synthetic peptide between 173-201 AA from the Central region of Human RHD.
<b>Isotype:</b>	IgG
<b>Form:</b>	Liquid
<b>Purification:</b>	Purified by protein A affinity chromatography, followed by peptide affinity purification.
<b>Storage:</b>	Store at 2-8 °C for up to 2 weeks. Store at -20 °C for long term storage. Avoid repeated freeze/thaw cycles.

# Datasheet

Version: 7.0.0

Revision date: 02 Jun 2025



**UniProt Primary AC:** Q02161 ([UniProt](#), [ExPASy](#))

**KEGG:** hsa:6007

**Molecular Weight:** Calculated MW: 45.2 kDa

**Buffer:** PBS containing 0.09% sodium azide.

**Concentration:** 0.5 mg/ml

**Note:** THIS PRODUCT IS FOR RESEARCH USE ONLY. NOT FOR USE IN DIAGNOSTIC, THERAPEUTIC OR COSMETIC PROCEDURES. NOT FOR HUMAN OR ANIMAL CONSUMPTION.

For Reference Only