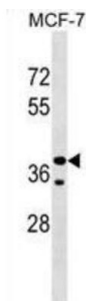


# Collagen And Calcium-Binding EGF Domain-Containing Protein 1 (CCBE1) Antibody

Catalogue No.: abx029395



This gene is thought to function in extracellular matrix remodeling and migration. It is predominantly expressed in the ovary, but down regulated in ovarian cancer cell lines and primary carcinomas, suggesting its role as a tumour suppressor. Mutations in this gene have been associated with Hennekam lymphangiectasia-lymphedema syndrome, a generalized lymphatic dysplasia in humans.

<b>Target:</b>	Collagen And Calcium-Binding EGF Domain-Containing Protein 1 (CCBE1)
<b>Clonality:</b>	Polyclonal
<b>Reactivity:</b>	Human
<b>Tested Applications:</b>	ELISA, WB
<b>Host:</b>	Rabbit
<b>Recommended dilutions:</b>	WB: 1/1000. Optimal dilutions/concentrations should be determined by the end user.
<b>Conjugation:</b>	Unconjugated
<b>Immunogen:</b>	KLH-conjugated synthetic peptide between 163-191 amino acids from the Central region of human CCBE1.
<b>Isotype:</b>	IgG
<b>Form:</b>	Liquid
<b>Purification:</b>	Purified through a protein A column, followed by peptide affinity purification.
<b>Storage:</b>	Aliquot and store at -20°C. Avoid repeated freeze/thaw cycles.
<b>UniProt Primary AC:</b>	Q6UXH8 ( <a href="#">UniProt</a> , <a href="#">ExPASy</a> )

# Datasheet

Version: 2.0.0

Revision date: 10 Sep 2025



**Gene Symbol:** CCBE1

**KEGG:** hsa:147372

**String:** [9606.ENSP00000404464](#)

**Molecular Weight:** Calculated MW: 44.1 kDa

**Buffer:** PBS containing 0.09% sodium azide.

**Note:** THIS PRODUCT IS FOR RESEARCH USE ONLY. NOT FOR USE IN DIAGNOSTIC, THERAPEUTIC OR COSMETIC PROCEDURES. NOT FOR HUMAN OR ANIMAL CONSUMPTION.

For Reference Only