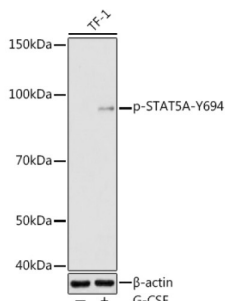


Signal Transducer and Activator of Transcription 5A Phospho-Tyr694 (STAT5A pY694) Antibody

Catalogue No.: abx000190



STAT5A (pY694) Antibody is a Rabbit Polyclonal antibody against STAT5A (pY694). The protein encoded by this gene is a member of the STAT family of transcription factors. In response to cytokines and growth factors, STAT family members are phosphorylated by the receptor associated kinases, and then form homo- or heterodimers that translocate to the cell nucleus where they act as transcription activators. This protein is activated by, and mediates the responses of many cell ligands, such as IL2, IL3, IL7 GM-CSF, erythropoietin, thrombopoietin, and different growth hormones. Activation of this protein in myeloma and lymphoma associated with a TEL/JAK2 gene fusion is independent of cell stimulus and has been shown to be essential for tumorigenesis. The mouse counterpart of this gene is found to induce the expression of BCL2L1/BCL-X(L), which suggests the antiapoptotic function of this gene in cells. Alternatively spliced transcript variants have been found for this gene.

Target: Signal Transducer and Activator of Transcription 5A Phospho-Tyr694 (STAT5A pY694)

Clonality: Polyclonal

Target Modification: Tyr694

Modification: Phosphorylation

Reactivity: Human

Tested Applications: ELISA, WB

Host: Rabbit

Recommended dilutions: ELISA: 1 µg/ml, WB: 1/500 - 1/1000. Optimal dilutions/concentrations should be determined by the end user.

Conjugation: Unconjugated

Immunogen: A synthetic phosphorylated peptide around Y694 of human STAT5A.

Isotype: IgG

Datasheet

Version: 4.0.0
Revision date: 11 Sep 2025



Form:	Liquid
Purification:	Purified by affinity chromatography.
Storage:	Aliquot and store at -20°C. Avoid repeated freeze/thaw cycles.
UniProt Primary AC:	P42229 (UniProt , ExPASy)
Gene Symbol:	STAT5A
GeneID:	6776
NCBI Accession:	NP_001275647.1
KEGG:	hsa:6776
String:	9606.ENSP00000341208
Molecular Weight:	Calculated MW: 91 kDa Observed MW: 90 kDa
Buffer:	PBS, pH 7.3, containing 0.09% sodium azide, 50% glycerol.
Concentration:	> 0.2 mg/ml
Note:	THIS PRODUCT IS FOR RESEARCH USE ONLY. NOT FOR USE IN DIAGNOSTIC, THERAPEUTIC OR COSMETIC PROCEDURES. NOT FOR HUMAN OR ANIMAL CONSUMPTION.