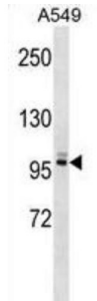


# Pleckstrin Homology And RhoGEF Domain Containing G5 (PLEKHG5) Antibody

Catalogue No.: abx029416



This gene encodes a protein that activates the nuclear factor kappa B (NFkB1) signaling pathway. Mutations in this gene have been found in a family with distal spinal muscular atrophy.

**Target:** Pleckstrin Homology And RhoGEF Domain Containing G5 (PLEKHG5)

**Clonality:** Polyclonal

**Reactivity:** Human

**Tested Applications:** ELISA, WB

**Host:** Rabbit

**Recommended dilutions:** WB: 1/1000. Optimal dilutions/concentrations should be determined by the end user.

**Conjugation:** Unconjugated

**Immunogen:** KLH-conjugated synthetic peptide between 175-202 amino acids from the N-terminal region of human PLEKHG5.

**Isotype:** IgG

**Form:** Liquid

**Purification:** Purified through a protein A column, followed by peptide affinity purification.

**Storage:** Aliquot and store at -20°C. Avoid repeated freeze/thaw cycles.

**UniProt Primary AC:** O94827 ([UniProt](#), [ExPASy](#))

**Gene Symbol:** PLEKHG5

# Datasheet

Version: 3.0.0

Revision date: 15 Oct 2025



**KEGG:** hsa:57449

**String:** [9606.ENSP00000439625](#)

**Molecular Weight:** Calculated MW: 111 kDa

**Buffer:** PBS containing 0.09% sodium azide.

**Specificity:** Predicted to react with Mouse and Rat PLEKHG5.

**Note:** THIS PRODUCT IS FOR RESEARCH USE ONLY. NOT FOR USE IN DIAGNOSTIC, THERAPEUTIC OR COSMETIC PROCEDURES. NOT FOR HUMAN OR ANIMAL CONSUMPTION.

For Reference Only