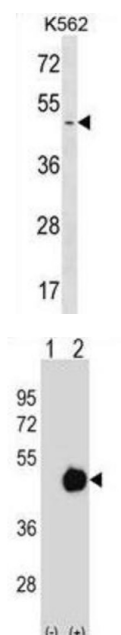


Protein Phosphatase Methylesterase 1 (PPME1) Antibody

Catalogue No.: abx029420



Protein phosphatase methylesterase-1 catalyzes the demethylation of the protein phosphatase-2A catalytic subunit (PPP2CA; MIM 176915) (Ogris et al., 1999 [PubMed 10318862]).

Target: Protein Phosphatase Methylesterase 1 (PPME1)

Clonality: Polyclonal

Reactivity: Human

Tested Applications: ELISA, WB

Host: Rabbit

Recommended dilutions: WB: 1/1000. Optimal dilutions/concentrations should be determined by the end user.

Conjugation: Unconjugated

Immunogen: KLH-conjugated synthetic peptide between 351-379 amino acids from the C-terminal region of human PPME1.

Isotype: IgG

Form: Liquid

Datasheet

Version: 3.0.0
Revision date: 20 Jul 2025



| | |
|----------------------------|--|
| Purification: | Purified through a protein A column, followed by peptide affinity purification. |
| Storage: | Aliquot and store at -20°C. Avoid repeated freeze/thaw cycles. |
| UniProt Primary AC: | Q9Y570 (UniProt , ExPASy) |
| Gene Symbol: | PPME1 |
| String: | 9606.ENSP00000381461 |
| Molecular Weight: | Calculated MW: 42.3 kDa |
| Buffer: | PBS containing 0.09% sodium azide. |
| Specificity: | Predicted to react with Mouse, Rat and Cow PPME1. |
| Note: | THIS PRODUCT IS FOR RESEARCH USE ONLY. NOT FOR USE IN DIAGNOSTIC, THERAPEUTIC OR COSMETIC PROCEDURES. NOT FOR HUMAN OR ANIMAL CONSUMPTION. |

For Reference Only