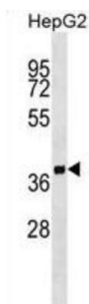


Secretory Carrier-Associated Membrane Protein 2 (SCAMP2) Antibody

Catalogue No.: abx029448



This gene product belongs to the SCAMP family of proteins which are secretory carrier membrane proteins. They function as carriers to the cell surface in post-golgi recycling pathways. Different family members are highly related products of distinct genes, and are usually expressed together. These findings suggest that the SCAMPs may function at the same site during vesicular transport rather than in separate pathways.

Target:	Secretory Carrier-Associated Membrane Protein 2 (SCAMP2)
Clonality:	Polyclonal
Reactivity:	Human
Tested Applications:	ELISA, WB
Host:	Rabbit
Recommended dilutions:	WB: 1/1000. Optimal dilutions/concentrations should be determined by the end user.
Conjugation:	Unconjugated
Immunogen:	KLH-conjugated synthetic peptide between 119-147 amino acids from the Central region of human SCAMP2.
Isotype:	IgG
Form:	Liquid
Purification:	Purified through a protein A column, followed by peptide affinity purification.
Storage:	Aliquot and store at -20°C. Avoid repeated freeze/thaw cycles.
UniProt Primary AC:	O15127 (UniProt , ExPASy)
Gene Symbol:	SCAMP2

Datasheet

Version: 3.0.0

Revision date: 05 Aug 2025



KEGG: hsa:10066

String: [9606.ENSP00000268099](#)

Molecular Weight: Calculated MW: 36.6 kDa

Buffer: PBS containing 0.09% sodium azide.

Specificity: Predicted to react with Mouse SCAMP2.

Note: THIS PRODUCT IS FOR RESEARCH USE ONLY. NOT FOR USE IN DIAGNOSTIC, THERAPEUTIC OR COSMETIC PROCEDURES. NOT FOR HUMAN OR ANIMAL CONSUMPTION.

For Reference Only