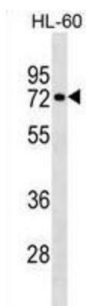


## Ras Homolog Family Member T2 (RHOT2) Antibody

Catalogue No.: abx029453



Mitochondrial GTPase involved in mitochondrial trafficking. Probably involved in control of anterograde transport of mitochondria and their subcellular distribution (By similarity).

**Target:** Ras Homolog Family Member T2 (RHOT2)

**Clonality:** Polyclonal

**Reactivity:** Human

**Tested Applications:** ELISA, WB

**Host:** Rabbit

**Recommended dilutions:** WB: 1/1000. Optimal dilutions/concentrations should be determined by the end user.

**Conjugation:** Unconjugated

**Immunogen:** KLH-conjugated synthetic peptide between 291-320 amino acids from the Central region of human RHOT2.

**Isotype:** IgG

**Form:** Liquid

**Purification:** Purified through a protein A column, followed by peptide affinity purification.

**Storage:** Aliquot and store at -20°C. Avoid repeated freeze/thaw cycles.

**UniProt Primary AC:** Q8IXI1 ([UniProt](#), [ExPASy](#))

**Gene Symbol:** RHOT2

# Datasheet

Version: 2.0.0

Revision date: 18 Mar 2025



**KEGG:** hsa:89941

**String:** [9606.ENSP00000321971](#)

**Molecular Weight:** Calculated MW: 68.1 kDa

**Buffer:** PBS containing 0.09% sodium azide.

**Note:** THIS PRODUCT IS FOR RESEARCH USE ONLY. NOT FOR USE IN DIAGNOSTIC, THERAPEUTIC OR COSMETIC PROCEDURES. NOT FOR HUMAN OR ANIMAL CONSUMPTION.

For Reference Only