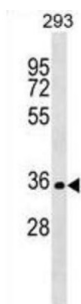


## SIX Homeobox 2 (SIX2) Antibody

Catalogue No.: abx029459



This gene is a member of the vertebrate gene family which encode proteins homologous to the *Drosophila* 'sine oculis' homeobox protein. The encoded protein is a transcription factor which, like other members of this gene family, may be involved in limb or eye development.

**Target:** SIX Homeobox 2 (SIX2)

**Clonality:** Polyclonal

**Reactivity:** Human

**Tested Applications:** ELISA, WB

**Host:** Rabbit

**Recommended dilutions:** WB: 1/1000. Optimal dilutions/concentrations should be determined by the end user.

**Conjugation:** Unconjugated

**Immunogen:** KLH-conjugated synthetic peptide between 89-119 amino acids from the Central region of human SIX2.

**Isotype:** IgG

**Form:** Liquid

**Purification:** Purified through a protein A column, followed by peptide affinity purification.

**Storage:** Aliquot and store at -20°C. Avoid repeated freeze/thaw cycles.

**UniProt Primary AC:** Q9NPC8 ([UniProt](#), [ExPASy](#))

**Gene Symbol:** SIX2

# Datasheet

Version: 3.0.0

Revision date: 02 Sep 2025



**String:** [9606.ENSF00000304502](#)

**Molecular Weight:** Calculated MW: 32.3 kDa

**Buffer:** PBS containing 0.09% sodium azide.

**Specificity:** Predicted to react with Mouse, Zebrafish, Drosophila and Xenopus SIX2.

**Note:** THIS PRODUCT IS FOR RESEARCH USE ONLY. NOT FOR USE IN DIAGNOSTIC, THERAPEUTIC OR COSMETIC PROCEDURES. NOT FOR HUMAN OR ANIMAL CONSUMPTION.

For Reference Only