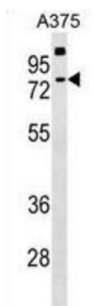


## Transketolase-Like Protein 2 (TKTL2) Antibody

Catalogue No.: abx029475



TKTL2 plays an essential role in total transketolase activity and cell proliferation in cancer cells; after transfection with anti-TKTL1 siRNA, total transketolase activity dramatically decreases and proliferation was significantly inhibited in cancer cells. Play a pivotal role in carcinogenesis.

**Target:** Transketolase-Like Protein 2 (TKTL2)

**Clonality:** Polyclonal

**Reactivity:** Human

**Tested Applications:** ELISA, WB

**Host:** Rabbit

**Recommended dilutions:** WB: 1/1000. Optimal dilutions/concentrations should be determined by the end user.

**Conjugation:** Unconjugated

**Immunogen:** KLH-conjugated synthetic peptide between 43-71 amino acids from the N-terminal region of human TKTL2.

**Isotype:** IgG

**Form:** Liquid

**Purification:** Purified through a protein A column, followed by peptide affinity purification.

**Storage:** Aliquot and store at -20°C. Avoid repeated freeze/thaw cycles.

**UniProt Primary AC:** Q9H0I9 ([UniProt](#), [ExPASy](#))

**Gene Symbol:** TKTL2

# Datasheet

Version: 2.0.0

Revision date: 18 Mar 2025



**String:** [9606.ENSF00000280605](#)

**Molecular Weight:** Calculated MW: 67.9 kDa

**Buffer:** PBS containing 0.09% sodium azide.

**Note:** THIS PRODUCT IS FOR RESEARCH USE ONLY. NOT FOR USE IN DIAGNOSTIC, THERAPEUTIC OR COSMETIC PROCEDURES. NOT FOR HUMAN OR ANIMAL CONSUMPTION.

For Reference Only