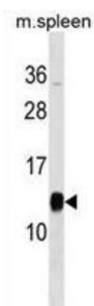


Prefoldin Subunit 1 (PFDN1) Antibody

Catalogue No.: abx029497



This gene encodes a member of the prefoldin beta subunit family. The encoded protein is one of six subunits of prefoldin, a molecular chaperone complex that binds and stabilizes newly synthesized polypeptides, thereby allowing them to fold correctly. The complex, consisting of two alpha and four beta subunits, forms a double beta barrel assembly with six protruding coiled-coils.

Target: Prefoldin Subunit 1 (PFDN1)

Clonality: Polyclonal

Reactivity: Human, Mouse

Tested Applications: ELISA, WB

Host: Rabbit

Recommended dilutions: WB: 1/1000. Optimal dilutions/concentrations should be determined by the end user.

Conjugation: Unconjugated

Immunogen: KLH-conjugated synthetic peptide between 86-113 amino acids from the C-terminal region of human PFDN1.

Isotype: IgG

Form: Liquid

Purification: Purified through a protein A column, followed by peptide affinity purification.

Storage: Aliquot and store at -20°C. Avoid repeated freeze/thaw cycles.

UniProt Primary AC: O60925 ([UniProt](#), [ExPASy](#))

Gene Symbol: PFDN1

Datasheet

Version: 4.0.0

Revision date: 20 Aug 2025



KEGG: hsa:5201

String: [9606.ENSP00000261813](#)

Molecular Weight: Calculated MW: 14.2 kDa

Buffer: PBS containing 0.09% sodium azide.

Specificity: Predicted to react with Cow PFDN1.

Note: THIS PRODUCT IS FOR RESEARCH USE ONLY. NOT FOR USE IN DIAGNOSTIC, THERAPEUTIC OR COSMETIC PROCEDURES. NOT FOR HUMAN OR ANIMAL CONSUMPTION.

For Reference Only