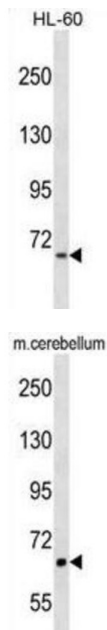


A-Kinase Anchor Protein 8 Like (AKAP8L) Antibody

Catalogue No.: abx029511



AKAP8L could play a role in constitutive transport element (CTE) mediated gene expression. Does not seem to be implicated in the binding of regulatory subunit II of PKA. May be involved in nuclear envelope breakdown and chromatin condensation. May regulate the initiation phase of DNA replication when associated with TMPO-beta.

Target: A-Kinase Anchor Protein 8 Like (AKAP8L)

Clonality: Polyclonal

Reactivity: Human, Mouse

Tested Applications: ELISA, WB

Host: Rabbit

Recommended dilutions: WB: 1/1000. Optimal dilutions/concentrations should be determined by the end user.

Conjugation: Unconjugated

Immunogen: KLH-conjugated synthetic peptide between 485-512 amino acids from the C-terminal region of human AKAP8L.

Isotype: IgG

Form: Liquid

Datasheet

Version: 4.0.0
Revision date: 12 Jun 2025



Purification:	Purified through a protein A column, followed by peptide affinity purification.
Storage:	Aliquot and store at -20°C. Avoid repeated freeze/thaw cycles.
UniProt Primary AC:	Q9ULX6 (UniProt , ExPASy)
Gene Symbol:	AKAP8L
String:	9606.ENSP00000380557
Molecular Weight:	Calculated MW: 71.6 kDa
Buffer:	PBS containing 0.09% sodium azide.
Note:	THIS PRODUCT IS FOR RESEARCH USE ONLY. NOT FOR USE IN DIAGNOSTIC, THERAPEUTIC OR COSMETIC PROCEDURES. NOT FOR HUMAN OR ANIMAL CONSUMPTION.

For Reference Only