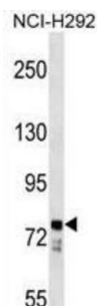


Bardet-Biedl Syndrome 7 Protein (BBS7) Antibody

Catalogue No.: abx029512



Mutations in this gene have been observed in patients with Bardet-Biedl syndrome type 7. The encoded protein may play a role in eye, limb, cardiac and reproductive system development. Two transcript variants encoding distinct isoforms have been identified for this gene.

Target: Bardet-Biedl Syndrome 7 Protein (BBS7)

Clonality: Polyclonal

Reactivity: Human

Tested Applications: ELISA, WB

Host: Rabbit

Recommended dilutions: WB: 1/1000. Optimal dilutions/concentrations should be determined by the end user.

Conjugation: Unconjugated

Immunogen: KLH-conjugated synthetic peptide between 73-99 amino acids from the N-terminal region of human BBS7.

Isotype: IgG

Form: Liquid

Purification: Purified through a protein A column, followed by peptide affinity purification.

Storage: Aliquot and store at -20°C. Avoid repeated freeze/thaw cycles.

UniProt Primary AC: Q8IWZ6 ([UniProt](#), [ExPASy](#))

Gene Symbol: BBS7

Datasheet

Version: 3.0.0

Revision date: 06 Jun 2025



KEGG: hsa:55212

String: [9606.ENSP00000264499](#)

Molecular Weight: Calculated MW: 80.4 kDa

Buffer: PBS containing 0.09% sodium azide.

Specificity: Predicted to react with Mouse BBS7.

Note: THIS PRODUCT IS FOR RESEARCH USE ONLY. NOT FOR USE IN DIAGNOSTIC, THERAPEUTIC OR COSMETIC PROCEDURES. NOT FOR HUMAN OR ANIMAL CONSUMPTION.

For Reference Only