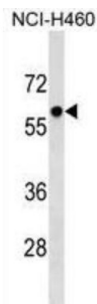


## Primase, DNA, Polypeptide 2 (58 kDa ) (PRIM2) Antibody

Catalogue No.: abx029524



The replication of DNA in eukaryotic cells is carried out by a complex chromosomal replication apparatus, in which DNA polymerase alpha and primase are two key enzymatic components. Primase, which is a heterodimer of a small subunit and a large subunit, synthesizes small RNA primers for the Okazaki fragments made during discontinuous DNA replication. The protein encoded by this gene is the large, 58 kDa primase subunit. [provided by RefSeq].

<b>Target:</b>	Primase, DNA, Polypeptide 2 (58 kDa ) (PRIM2)
<b>Clonality:</b>	Polyclonal
<b>Reactivity:</b>	Human
<b>Tested Applications:</b>	ELISA, WB
<b>Host:</b>	Rabbit
<b>Recommended dilutions:</b>	WB: 1/1000. Optimal dilutions/concentrations should be determined by the end user.
<b>Conjugation:</b>	Unconjugated
<b>Immunogen:</b>	KLH-conjugated synthetic peptide between 317-345 amino acids from the Central region of human PRIM2.
<b>Isotype:</b>	IgG
<b>Form:</b>	Liquid
<b>Purification:</b>	Purified through a protein A column, followed by peptide affinity purification.
<b>Storage:</b>	Aliquot and store at -20°C. Avoid repeated freeze/thaw cycles.
<b>UniProt Primary AC:</b>	P49643 ( <a href="#">UniProt</a> , <a href="#">ExPASy</a> )
<b>KEGG:</b>	hsa:5558

# Datasheet

Version: 4.0.0

Revision date: 21 Jul 2025



**String:** [9606.ENSPO0000484105](#)

**Molecular Weight:** Calculated MW: 58.8 kDa

**Buffer:** PBS containing 0.09% sodium azide.

**Specificity:** Predicted to react with Rat PRIM2.

**Note:** THIS PRODUCT IS FOR RESEARCH USE ONLY. NOT FOR USE IN DIAGNOSTIC, THERAPEUTIC OR COSMETIC PROCEDURES. NOT FOR HUMAN OR ANIMAL CONSUMPTION.

For Reference Only