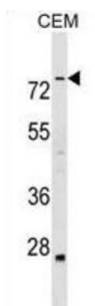


Actin-Binding LIM Protein 3 (ABLIM3) Antibody

Catalogue No.: abx029527



The LIM domain is a double zinc finger structure that promotes protein-protein interactions. LIM domain proteins, such as ABLIM3, play roles in embryonic development, cell lineage determination, and cancer (Krupp et al., 2006 [PubMed 16328021]).

Target: Actin-Binding LIM Protein 3 (ABLIM3)

Clonality: Polyclonal

Reactivity: Human

Tested Applications: ELISA, WB

Host: Rabbit

Recommended dilutions: WB: 1/1000. Optimal dilutions/concentrations should be determined by the end user.

Conjugation: Unconjugated

Immunogen: KLH-conjugated synthetic peptide between 613-641 amino acids from the C-terminal region of human ABLIM3.

Isotype: IgG

Form: Liquid

Purification: Purified through a protein A column, followed by peptide affinity purification.

Storage: Aliquot and store at -20°C. Avoid repeated freeze/thaw cycles.

UniProt Primary AC: O94929 ([UniProt](#), [ExPASy](#))

Gene Symbol: ABLIM3

Datasheet

Version: 6.0.0

Revision date: 01 Jul 2025



KEGG: hsa:22885

String: [9606.ENSP00000425394](#)

Molecular Weight: Calculated MW: 77.8 kDa

Buffer: PBS containing 0.09% sodium azide.

Specificity: Predicted to react with Mouse ABLIM3.

Note: THIS PRODUCT IS FOR RESEARCH USE ONLY. NOT FOR USE IN DIAGNOSTIC, THERAPEUTIC OR COSMETIC PROCEDURES. NOT FOR HUMAN OR ANIMAL CONSUMPTION.

For Reference Only