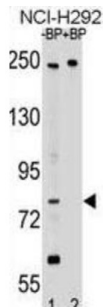


## DCC-Interacting Protein 13-Beta (APPL2) Antibody

Catalogue No.: abx029544



Required for the regulation of cell proliferation in response to extracellular signals mediated by an early endosomal compartment. Links Rab5 to nuclear signal transduction.

**Target:** DCC-Interacting Protein 13-Beta (APPL2)

**Clonality:** Polyclonal

**Reactivity:** Human

**Tested Applications:** ELISA, WB

**Host:** Rabbit

**Recommended dilutions:** WB: 1/1000. Optimal dilutions/concentrations should be determined by the end user.

**Conjugation:** Unconjugated

**Immunogen:** KLH-conjugated synthetic peptide between 124-152 amino acids from the N-terminal region of human APPL2.

**Isotype:** IgG

**Form:** Liquid

**Purification:** Purified through a protein A column, followed by peptide affinity purification.

**Storage:** Aliquot and store at -20°C. Avoid repeated freeze/thaw cycles.

**UniProt Primary AC:** Q8NEU8 ([UniProt](#), [ExPASy](#))

**Gene Symbol:** APPL2

# Datasheet

Version: 3.0.0

Revision date: 04 Oct 2025



**KEGG:** hsa:55198

**String:** [9606.ENSP00000446917](#)

**Molecular Weight:** Calculated MW: 74.5 kDa

**Buffer:** PBS containing 0.09% sodium azide.

**Specificity:** Predicted to react with Mouse and Rat APPL2.

**Note:** THIS PRODUCT IS FOR RESEARCH USE ONLY. NOT FOR USE IN DIAGNOSTIC, THERAPEUTIC OR COSMETIC PROCEDURES. NOT FOR HUMAN OR ANIMAL CONSUMPTION.

For Reference Only