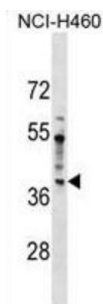


Serologically Defined Colon Cancer Antigen 8 (SDCCAG8) Antibody

Catalogue No.: abx029545



This gene encodes a centrosome associated protein. This protein may be involved in organizing the centrosome during interphase and mitosis. Mutations in this gene are associated with retinal-renal ciliopathy.

Target:	Serologically Defined Colon Cancer Antigen 8 (SDCCAG8)
Clonality:	Polyclonal
Reactivity:	Human
Tested Applications:	ELISA, WB
Host:	Rabbit
Recommended dilutions:	WB: 1/1000. Optimal dilutions/concentrations should be determined by the end user.
Conjugation:	Unconjugated
Immunogen:	KLH-conjugated synthetic peptide between 188-215 amino acids from the N-terminal region of human SDCCAG8.
Isotype:	IgG
Form:	Liquid
Purification:	Purified through a protein A column, followed by peptide affinity purification.
Storage:	Aliquot and store at -20°C. Avoid repeated freeze/thaw cycles.
UniProt Primary AC:	Q86SQ7 (UniProt , ExPASy)
Gene Symbol:	SDCCAG8

Datasheet

Version: 4.0.0

Revision date: 13 Aug 2025



KEGG: hsa:10806

String: [9606.ENSP00000355499](#)

Molecular Weight: Calculated MW: 82.7 kDa

Buffer: PBS containing 0.09% sodium azide.

Note: THIS PRODUCT IS FOR RESEARCH USE ONLY. NOT FOR USE IN DIAGNOSTIC, THERAPEUTIC OR COSMETIC PROCEDURES. NOT FOR HUMAN OR ANIMAL CONSUMPTION.

For Reference Only