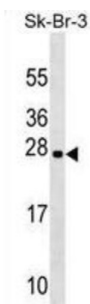


RAB32, Member RAS Oncogene Family (RAB32) Antibody

Catalogue No.: abx029558



Small GTP-binding proteins of the RAB family, such as RAB32, play essential roles in vesicle and granule targeting (Bao et al., 2002 [PubMed 11784320]).

Target:	RAB32, Member RAS Oncogene Family (RAB32)
Clonality:	Polyclonal
Reactivity:	Human
Tested Applications:	ELISA, WB
Host:	Rabbit
Recommended dilutions:	WB: 1/1000. Optimal dilutions/concentrations should be determined by the end user.
Conjugation:	Unconjugated
Immunogen:	KLH-conjugated synthetic peptide between 2-28 amino acids from the N-terminal region of human RAB32.
Isotype:	IgG
Form:	Liquid
Purification:	Purified through a protein A column, followed by peptide affinity purification.
Storage:	Aliquot and store at -20°C. Avoid repeated freeze/thaw cycles.
UniProt Primary AC:	Q13637 (UniProt , ExPASy)
KEGG:	hsa:10981

Datasheet

Version: 2.0.0

Revision date: 25 Aug 2025



String: [9606.ENSF00000356465](#)

Molecular Weight: Calculated MW: 25 kDa

Buffer: PBS containing 0.09% sodium azide.

Note: THIS PRODUCT IS FOR RESEARCH USE ONLY. NOT FOR USE IN DIAGNOSTIC, THERAPEUTIC OR COSMETIC PROCEDURES. NOT FOR HUMAN OR ANIMAL CONSUMPTION.

For Reference Only