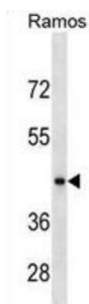


RGMB Domain Family Member B (RGMB) Antibody

Catalogue No.: abx029567



RGMB is a glycosylphosphatidylinositol (GPI) anchored member of the repulsive guidance molecule family (see RGMA, MIM 607362) and contributes to the patterning of the developing nervous system (Samad et al., 2005 [PubMed 15671031]).

Target: RGMB Domain Family Member B (RGMB)

Clonality: Polyclonal

Reactivity: Human

Tested Applications: ELISA, WB

Host: Rabbit

Recommended dilutions: WB: 1/1000. Optimal dilutions/concentrations should be determined by the end user.

Conjugation: Unconjugated

Immunogen: KLH-conjugated synthetic peptide between 380-407 amino acids from the C-terminal region of human RGMB.

Isotype: IgG

Form: Liquid

Purification: Purified through a protein A column, followed by peptide affinity purification.

Storage: Aliquot and store at -20°C. Avoid repeated freeze/thaw cycles.

UniProt Primary AC: Q6NW40 ([UniProt](#), [ExPASy](#))

KEGG: hsa:285704

Datasheet

Version: 4.0.0

Revision date: 28 Aug 2025



String: [9606.ENSPO0000308219](#)

Molecular Weight: Calculated MW: 47.5 kDa

Buffer: PBS containing 0.09% sodium azide.

Specificity: Predicted to react with Mouse RGMB.

Note: THIS PRODUCT IS FOR RESEARCH USE ONLY. NOT FOR USE IN DIAGNOSTIC, THERAPEUTIC OR COSMETIC PROCEDURES. NOT FOR HUMAN OR ANIMAL CONSUMPTION.

For Reference Only