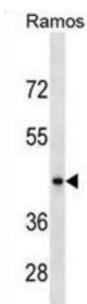


RGMB Domain Family Member B (RGMB) Antibody

Catalogue No.: abx029567



RGMB is a glycosylphosphatidylinositol (GPI) anchored member of the repulsive guidance molecule family (see RGMA, MIM 607362) and contributes to the patterning of the developing nervous system (Samad et al., 2005 [PubMed 15671031]).

| | |
|-------------------------------|--|
| Target: | RGMB Domain Family Member B (RGMB) |
| Clonality: | Polyclonal |
| Reactivity: | Human |
| Tested Applications: | ELISA, WB |
| Host: | Rabbit |
| Recommended dilutions: | WB: 1/1000. Optimal dilutions/concentrations should be determined by the end user. |
| Conjugation: | Unconjugated |
| Immunogen: | KLH-conjugated synthetic peptide between 380-407 amino acids from the C-terminal region of human RGMB. |
| Isotype: | IgG |
| Form: | Liquid |
| Purification: | Purified through a protein A column, followed by peptide affinity purification. |
| Storage: | Aliquot and store at -20°C. Avoid repeated freeze/thaw cycles. |
| UniProt Primary AC: | Q6NW40 (UniProt , ExPASy) |
| KEGG: | hsa:285704 |

Datasheet

Version: 4.0.0

Revision date: 02 May 2025



String: [9606.ENSPO0000308219](#)

Molecular Weight: Calculated MW: 47.5 kDa

Buffer: PBS containing 0.09% sodium azide.

Specificity: Predicted to react with Mouse RGMB.

Note: THIS PRODUCT IS FOR RESEARCH USE ONLY. NOT FOR USE IN DIAGNOSTIC, THERAPEUTIC OR COSMETIC PROCEDURES. NOT FOR HUMAN OR ANIMAL CONSUMPTION.

For Reference Only