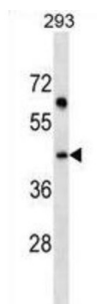


## 45 kDa Calcium-Binding Protein (SDF4) Antibody

Catalogue No.: abx029575



SDF4 may regulate calcium-dependent activities in the endoplasmic reticulum lumen or post-ER compartment (By similarity). Isoform 5 may be involved in the exocytosis of zymogens by pancreatic acini.

<b>Target:</b>	45 kDa Calcium-Binding Protein (SDF4)
<b>Research Area:</b>	Developmental Science
<b>Clonality:</b>	Polyclonal
<b>Reactivity:</b>	Human
<b>Tested Applications:</b>	ELISA, WB
<b>Host:</b>	Rabbit
<b>Recommended dilutions:</b>	WB: 1/1000. Optimal dilutions/concentrations should be determined by the end user.
<b>Conjugation:</b>	Unconjugated
<b>Immunogen:</b>	KLH-conjugated synthetic peptide between 258-287 amino acids from the C-terminal region of human SDF4.
<b>Isotype:</b>	IgG
<b>Form:</b>	Liquid
<b>Purification:</b>	Purified through a protein A column, followed by peptide affinity purification.
<b>Storage:</b>	Aliquot and store at -20°C. Avoid repeated freeze/thaw cycles.
<b>UniProt Primary AC:</b>	Q9BRK5 ( <a href="#">UniProt</a> , <a href="#">ExPASy</a> )

# Datasheet

Version: 3.0.0

Revision date: 14 Sep 2025



**Gene Symbol:** SDF4

**String:** [9606.ENSP00000353094](#)

**Molecular Weight:** Calculated MW: 41.8 kDa

**Buffer:** PBS containing 0.09% sodium azide.

**Specificity:** Predicted to react with Mouse, Rat and Monkey SDF4.

**Note:** THIS PRODUCT IS FOR RESEARCH USE ONLY. NOT FOR USE IN DIAGNOSTIC, THERAPEUTIC OR COSMETIC PROCEDURES. NOT FOR HUMAN OR ANIMAL CONSUMPTION.

For Reference Only