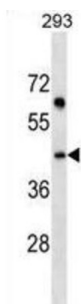


45 kDa Calcium-Binding Protein (SDF4) Antibody

Catalogue No.: abx029575



SDF4 may regulate calcium-dependent activities in the endoplasmic reticulum lumen or post-ER compartment (By similarity). Isoform 5 may be involved in the exocytosis of zymogens by pancreatic acini.

Target:	45 kDa Calcium-Binding Protein (SDF4)
Research Area:	Developmental Science
Clonality:	Polyclonal
Reactivity:	Human
Tested Applications:	ELISA, WB
Host:	Rabbit
Recommended dilutions:	WB: 1/1000. Optimal dilutions/concentrations should be determined by the end user.
Conjugation:	Unconjugated
Immunogen:	KLH-conjugated synthetic peptide between 258-287 amino acids from the C-terminal region of human SDF4.
Isotype:	IgG
Form:	Liquid
Purification:	Purified through a protein A column, followed by peptide affinity purification.
Storage:	Aliquot and store at -20°C. Avoid repeated freeze/thaw cycles.
UniProt Primary AC:	Q9BRK5 (UniProt , ExPASy)

Datasheet

Version: 3.0.0

Revision date: 29 Jun 2025



Gene Symbol: SDF4

String: [9606.ENSP00000353094](#)

Molecular Weight: Calculated MW: 41.8 kDa

Buffer: PBS containing 0.09% sodium azide.

Specificity: Predicted to react with Mouse, Rat and Monkey SDF4.

Note: THIS PRODUCT IS FOR RESEARCH USE ONLY. NOT FOR USE IN DIAGNOSTIC, THERAPEUTIC OR COSMETIC PROCEDURES. NOT FOR HUMAN OR ANIMAL CONSUMPTION.

For Reference Only