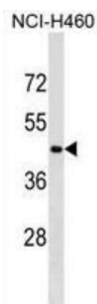


## Cytokine Receptor-Like Factor 3 (CRLF3) Antibody

Catalogue No.: abx029590



CRLF3 (Cytokine receptor-like factor 3) contains one fibronectin type-III domain. It is expressed in skin and squamous cell carcinoma (SCC) and in lesion actinic keratosis (AK).

**Target:** Cytokine Receptor-Like Factor 3 (CRLF3)

**Clonality:** Polyclonal

**Reactivity:** Human

**Tested Applications:** ELISA, WB

**Host:** Rabbit

**Recommended dilutions:** WB: 1/1000. Optimal dilutions/concentrations should be determined by the end user.

**Conjugation:** Unconjugated

**Immunogen:** KLH-conjugated synthetic peptide between 305-331 amino acids from the C-terminal region of human CRLF3.

**Isotype:** IgG

**Form:** Liquid

**Purification:** Purified through a protein A column, followed by peptide affinity purification.

**Storage:** Aliquot and store at -20°C. Avoid repeated freeze/thaw cycles.

**UniProt Primary AC:** Q8IUI8 ([UniProt](#), [ExPASy](#))

**Gene Symbol:** CRLF3

# Datasheet

Version: 3.0.0

Revision date: 29 Sep 2025



**KEGG:** hsa:51379

**String:** [9606.ENSP00000318804](#)

**Molecular Weight:** Calculated MW: 49.8 kDa

**Buffer:** PBS containing 0.09% sodium azide.

**Specificity:** Predicted to react with Mouse CRLF3.

**Note:** THIS PRODUCT IS FOR RESEARCH USE ONLY. NOT FOR USE IN DIAGNOSTIC, THERAPEUTIC OR COSMETIC PROCEDURES. NOT FOR HUMAN OR ANIMAL CONSUMPTION.

For Reference Only