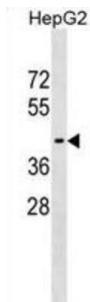


WD Repeat Domain Phosphoinositide-Interacting Protein 1 (WIP1) Antibody

Catalogue No.: abx029605



WD40 repeat proteins are key components of many essential biologic functions. They regulate the assembly of multiprotein complexes by presenting a beta-propeller platform for simultaneous and reversible protein-protein interactions. Members of the WIP1 subfamily of WD40 repeat proteins, such as WIP1, have a 7-bladed propeller structure and contain a conserved motif for interaction with phospholipids (Proikas-Cezanne et al., 2004 [PubMed 15602573]).

Target:	WD Repeat Domain Phosphoinositide-Interacting Protein 1 (WIP1)
Clonality:	Polyclonal
Reactivity:	Human
Tested Applications:	ELISA, WB
Host:	Rabbit
Recommended dilutions:	WB: 1/1000. Optimal dilutions/concentrations should be determined by the end user.
Conjugation:	Unconjugated
Immunogen:	KLH-conjugated synthetic peptide between 202-232 amino acids from the Central region of human WIP1.
Isotype:	IgG
Form:	Liquid
Purification:	Purified through a protein A column, followed by peptide affinity purification.
Storage:	Aliquot and store at -20°C. Avoid repeated freeze/thaw cycles.
UniProt Primary AC:	Q5MNZ9 (UniProt , ExPASy)

Datasheet

Version: 4.0.0

Revision date: 18 Mar 2025



KEGG: hsa:55062

String: [9606.ENSP00000262139](#)

Molecular Weight: Calculated MW: 48.7 kDa

Buffer: PBS containing 0.09% sodium azide.

Specificity: Predicted to react with Xenopus WIP1.

Note: THIS PRODUCT IS FOR RESEARCH USE ONLY. NOT FOR USE IN DIAGNOSTIC, THERAPEUTIC OR COSMETIC PROCEDURES. NOT FOR HUMAN OR ANIMAL CONSUMPTION.

For Reference Only