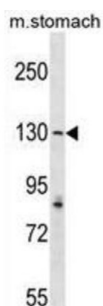


ATP/GTP Binding Protein 1 (AGTPBP1) Antibody

Catalogue No.: abx029618



NNA1 is a zinc carboxypeptidase that contains nuclear localization signals and an ATP/GTP-binding motif that was initially cloned from regenerating spinal cord neurons of the mouse.

Target: ATP/GTP Binding Protein 1 (AGTPBP1)

Clonality: Polyclonal

Reactivity: Human, Mouse

Tested Applications: ELISA, WB

Host: Rabbit

Recommended dilutions: WB: 1/1000. Optimal dilutions/concentrations should be determined by the end user.

Conjugation: Unconjugated

Immunogen: KLH-conjugated synthetic peptide between 363-392 amino acids from the N-terminal region of human AGTPBP1.

Isotype: IgG

Form: Liquid

Purification: Purified through a protein A column, followed by peptide affinity purification.

Storage: Aliquot and store at -20°C. Avoid repeated freeze/thaw cycles.

UniProt Primary AC: Q9UPW5 ([UniProt](#), [ExPASy](#))

Gene Symbol: AGTPBP1

Datasheet

Version: 3.0.0

Revision date: 05 Jun 2025



String: [9606.ENSF00000338512](#)

Molecular Weight: Calculated MW: 138 kDa

Buffer: PBS containing 0.09% sodium azide.

Note: THIS PRODUCT IS FOR RESEARCH USE ONLY. NOT FOR USE IN DIAGNOSTIC, THERAPEUTIC OR COSMETIC PROCEDURES. NOT FOR HUMAN OR ANIMAL CONSUMPTION.

For Reference Only