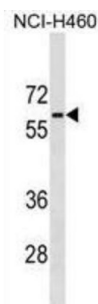


Phosphoglucomutase-Like Protein 5 (PGM5) Antibody

Catalogue No.: abx029639



Phosphoglucomutases (EC 5.2.2.2.), such as PGM5, are phosphotransferases involved in interconversion of glucose-1-phosphate and glucose-6-phosphate. PGM activity is essential in formation of carbohydrates from glucose-6-phosphate and in formation of glucose-6-phosphate from galactose and glycogen (Edwards et al., 1995 [PubMed 8586438]).

Target: Phosphoglucomutase-Like Protein 5 (PGM5)

Clonality: Polyclonal

Reactivity: Human

Tested Applications: ELISA, WB

Host: Rabbit

Recommended dilutions: WB: 1/1000. Optimal dilutions/concentrations should be determined by the end user.

Conjugation: Unconjugated

Immunogen: KLH-conjugated synthetic peptide between 404-430 amino acids from the C-terminal region of human PGM5.

Isotype: IgG

Form: Liquid

Purification: Purified through a protein A column, followed by peptide affinity purification.

Storage: Aliquot and store at -20°C. Avoid repeated freeze/thaw cycles.

UniProt Primary AC: Q15124 ([UniProt](#), [ExPASy](#))

KEGG: hsa:5239

Datasheet

Version: 4.0.0

Revision date: 29 Aug 2025



String: [9606.ENSF00000379678](#)

Molecular Weight: Calculated MW: 62.2 kDa

Buffer: PBS containing 0.09% sodium azide.

Note: THIS PRODUCT IS FOR RESEARCH USE ONLY. NOT FOR USE IN DIAGNOSTIC, THERAPEUTIC OR COSMETIC PROCEDURES. NOT FOR HUMAN OR ANIMAL CONSUMPTION.

For Reference Only