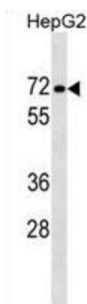


Protein Phosphatase 1 Regulatory Subunit 16B (PPP1R16B) Antibody

Catalogue No.: abx029640



The protein encoded by this gene is membrane-associated and contains five ankyrin repeats, a protein phosphatase-1-interacting domain, and a carboxy-terminal CAAX box domain. Synthesis of the encoded protein is inhibited by transforming growth factor beta-1. The protein may bind to the membrane through its CAAX box domain and may act as a signaling molecule through interaction with protein phosphatase-1. Alternatively spliced transcript variants encoding different isoforms have been identified in this gene.

Target:	Protein Phosphatase 1 Regulatory Subunit 16B (PPP1R16B)
Clonality:	Polyclonal
Reactivity:	Human
Tested Applications:	ELISA, WB
Host:	Rabbit
Recommended dilutions:	WB: 1/1000. Optimal dilutions/concentrations should be determined by the end user.
Conjugation:	Unconjugated
Immunogen:	KLH-conjugated synthetic peptide between 372-399 amino acids from the Central region of human PPP1R16B.
Isotype:	IgG
Form:	Liquid
Purification:	Purified through a protein A column, followed by peptide affinity purification.
Storage:	Aliquot and store at -20°C. Avoid repeated freeze/thaw cycles.
UniProt Primary AC:	Q96T49 (UniProt , ExPASy)

Datasheet

Version: 4.0.0

Revision date: 05 Aug 2025



Gene Symbol: PPP1R16B

KEGG: hsa:26051

String: [9606.ENSP00000299824](#)

Molecular Weight: Calculated MW: 63.6 kDa

Buffer: PBS containing 0.09% sodium azide.

Specificity: Predicted to react with Mouse and Cow PPP1R16B.

Note: THIS PRODUCT IS FOR RESEARCH USE ONLY. NOT FOR USE IN DIAGNOSTIC, THERAPEUTIC OR COSMETIC PROCEDURES. NOT FOR HUMAN OR ANIMAL CONSUMPTION.

For Reference Only