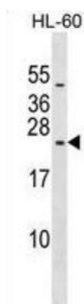


Ribosomal Protein L10 Like (RPL10L) Antibody

Catalogue No.: abx029650



This gene encodes a protein sharing sequence similarity with ribosomal protein L10. It is not currently known whether the encoded protein is a functional ribosomal protein or whether it has evolved a function that is independent of the ribosome. This gene is intronless.

Target: Ribosomal Protein L10 Like (RPL10L)

Clonality: Polyclonal

Reactivity: Human

Tested Applications: ELISA, WB

Host: Rabbit

Recommended dilutions: WB: 1/1000. Optimal dilutions/concentrations should be determined by the end user.

Conjugation: Unconjugated

Immunogen: KLH-conjugated synthetic peptide between 9-35 amino acids from the N-terminal region of human RPL10L.

Isotype: IgG

Form: Liquid

Purification: Purified through a protein A column, followed by peptide affinity purification.

Storage: Aliquot and store at -20°C. Avoid repeated freeze/thaw cycles.

UniProt Primary AC: Q96L21 ([UniProt](#), [ExPASy](#))

Gene Symbol: RPL10L

Datasheet

Version: 4.0.0

Revision date: 21 Jul 2025



KEGG: hsa:140801

String: [9606.ENSP00000298283](#)

Molecular Weight: Calculated MW: 24.5 kDa

Buffer: PBS containing 0.09% sodium azide.

Specificity: Predicted to react with Mouse, Rat, Cow, Pig, Sheep, Monkey and C. elegans RPL10L.

Note: THIS PRODUCT IS FOR RESEARCH USE ONLY. NOT FOR USE IN DIAGNOSTIC, THERAPEUTIC OR COSMETIC PROCEDURES. NOT FOR HUMAN OR ANIMAL CONSUMPTION.

For Reference Only